

SIMPLI|CT™

SIMPLI|CT™

Precision Laser Guidance for **CT Guided Interventions**



 NeoRad

Scan for location, enter angular coordinates & insert

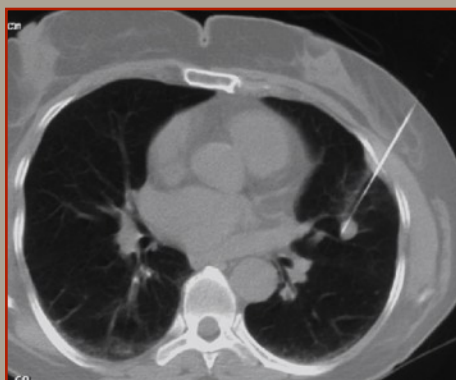


SimpliCT™ Interventional Guidance System allows precise needle placement for:

- Minimally invasive procedures such as biopsy and aspirations
- Treatments such as abscess drainages, tumor ablations and nerve root blocks

Using laser guidance technology, SimpliCT™ increases procedural accuracy, enhances patient comfort, and saves time and money...

Scan for location



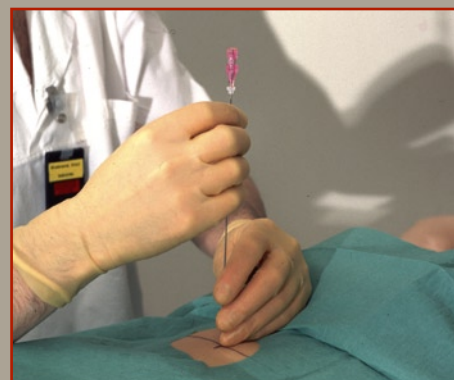
Compatible with any scanner

Enter angular coordinates



Confirmation at a glance

Advance the needle to target



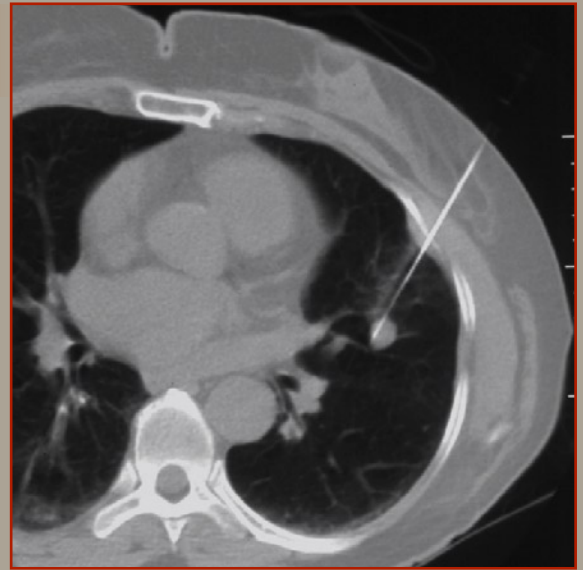
Follow the path of laser

rt needle... it's just that simple!

SIMPLI CT™

Increases Procedural Accuracy

- Laser guidance ensures correct needle path
- Faciliates double angulation punctures
- Increased accuracy allows physician to perform more aggressive procedures
- Reduces complication risks



Enhances Patient Comfort

- Reduces the number of needle passes¹
- Reduces the radiation to patient and operator²
- Reduces the procedure time²
- Faciliates lateral punctures, no need to move patient



Saves Time and Money

- Requires fewer scans and fewer punctures per procedures
- Can be used with virtually any straight needle or Trocar Catheter
- Battery powered
- Mobile system can be used with multiple scanners



1. Brabrand K, Aalækken TM, Krombach GA, Günther RW, Tariq R, Magnusson A, Lindgren PG. A multicenter evaluation of a new laser guidance system for CTintervention. (Acta Radiol 2004;45:308-312.)
2. Hauser M, Hagivedt T, Lloret I. Use of a laser guidance system in CTguided interventions: Effects on patient radiation dose and procedure time. J Vasc Interv Radiol. Submitted.

Specifications

Base movement:

The base rolls on three wheels, one wheel has a locking device.

Display:

3 digit LED panel for each plane (X/Y, Z and G).

Laser:

Point Laser: Class II laser according to IEC 60825-1 and FDA standard 21 CFR 1040.10 and 1040.11
 Alignment Laser: Class II laser according to IEC 60825-1 and FDA standard 21 CFR 1040.10 and 1040.11

Operating range:

Horizontal position: $\pm 45^\circ$ in X/Y and Z plane; Gantry tilt $\pm 45^\circ$
 Vertical position: $\pm 45^\circ$ in X/Y and Z plane; Gantry tilt $\pm 45^\circ$

Laser Unit on horizontal rail: Approx. 65 cm

Laser Unit on vertical rail: Approx. 90 cm (70-160 cm above floor level)

Resolution: 1° in any direction.

Accuracy: $\pm 1^\circ$ in any direction

Physical Dimensions:

Weight: 50,4 kg (Arm and base: 47,3 kg; head 3,1 kg)
 Height: 180 cm
 Width: 73,8 cm
 Depth: Working position: 131 cm;
 Transportation position: 75 cm
 Wheel diameter: 10 cm

Power supply:

SimpliCT™ is battery operated (6 V), and comes supplied with a battery charger and a spare battery. Battery capacity of a well maintained battery will be sufficient for 10 standard procedures of 15 minutes duration.

Distributor:



NeoRad AS
 Parkveien 55
 0256 Oslo
 Norway
 Phone: + 47 24 11 09 80
 Fax: + 47 24 11 09 51
 E-mail: mail@neorad.no
 www.neorad.com



SimpliCT™ complies with the European Council Directive 93/42/EEC of June 14 1993. SimpliCT™ is certified by Nemko (Europe) and CSA (North America) according to the following standards:

Safety: IEC 60601-1 and IEC 60601-1-4
 EMC: IEC 60601-1-2



Any modification to the product, not authorized by NeoRad AS, will invalidate this declaration.

SimpliCT™ is a registered trademark of NeoRad AS.